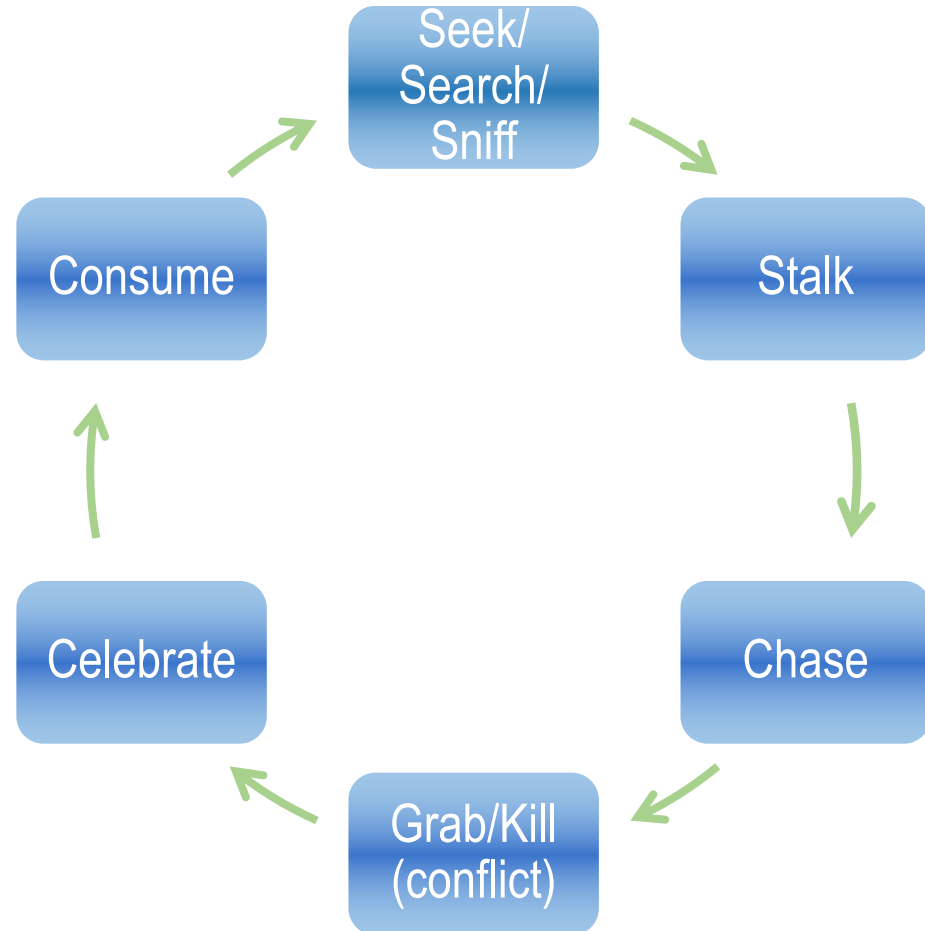


Biologically Appropriate Activity – predatory cycle



- **Seek/Search/Sniff**
 - “Find It”, Puzzle toys, snuffle mat, nose games, novelty, “sniffaris” on a long line, car rides
- **Stalk**
 - Personal play with your dog – high and low arousal
- **Chase**
 - Flirt pole, ball toss, keep away, take turns
- **Grab/Kill**
 - Tug, spring pole, wrestle, weight pull, bite sports
- **Celebrate**
 - Woo Hoo!, victory lap
- **Consume**
 - Shredding, dissecting, chewing